

Updated

A POCKET GUIDE FOR Alcohol Screening and Brief Intervention

Updated 2005 Edition

This pocket guide is condensed from the 34-page NIAAA guide, *Helping Patients Who Drink Too Much: A Clinician's Guide*.

Visit www.niaaa.nih.gov/guide for related professional support resources, including:

- patient education handouts
- preformatted progress notes
- animated slide show for training
- materials in Spanish

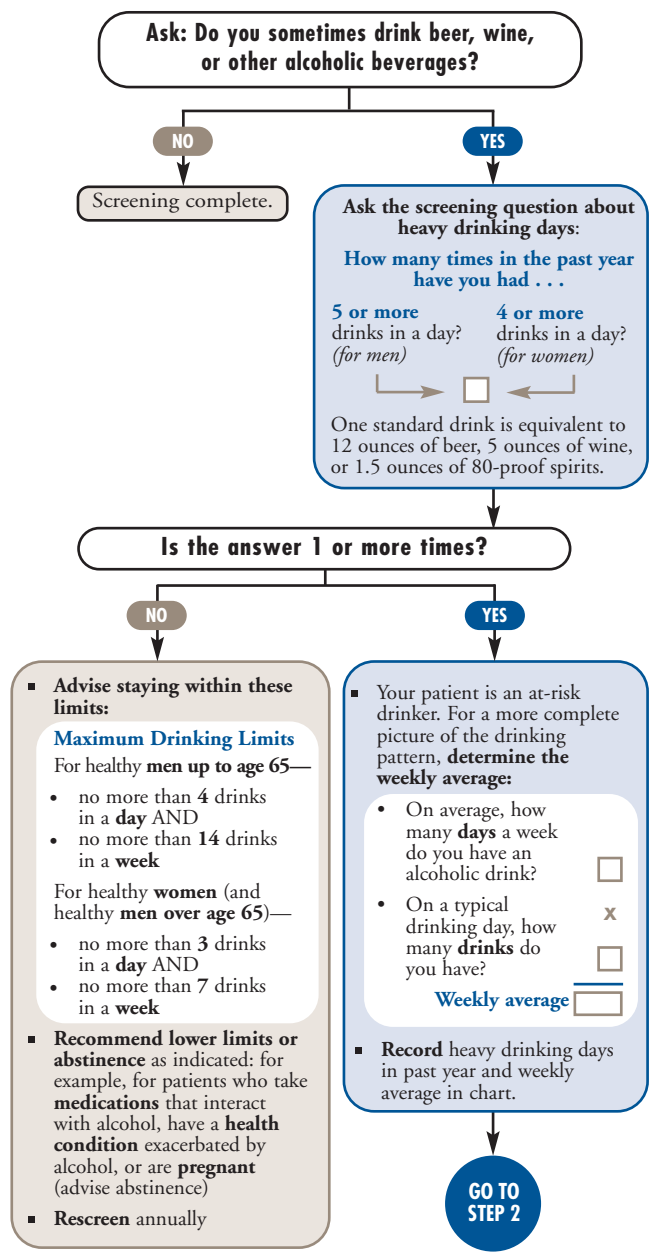
Or contact:

NIAAA Publications Distribution Center
 P.O. Box 10686, Rockville, MD 20849-0686
 (301) 443-3860
www.niaaa.nih.gov



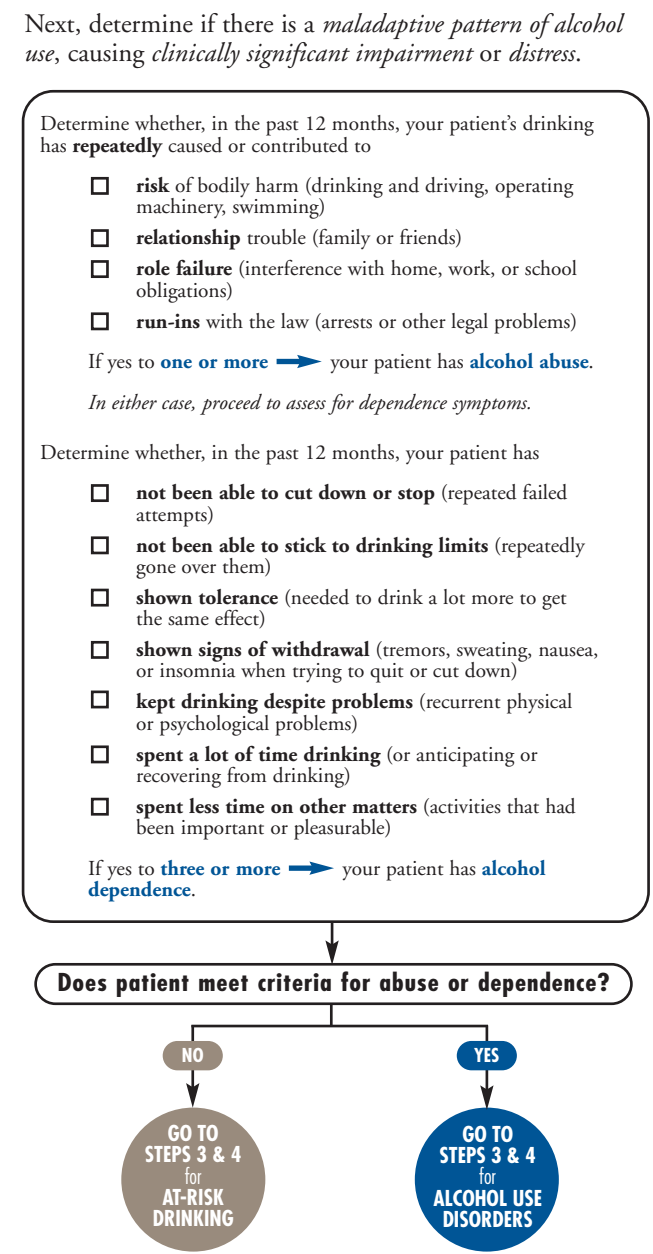
HOW TO SCREEN FOR HEAVY DRINKING

STEP 1 Ask About Alcohol Use



HOW TO ASSESS FOR ALCOHOL USE DISORDERS

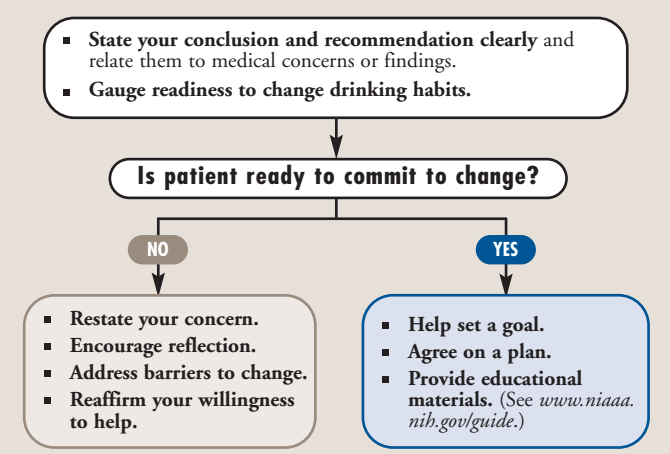
STEP 2 Assess For Alcohol Use Disorders



HOW TO CONDUCT A BRIEF INTERVENTION

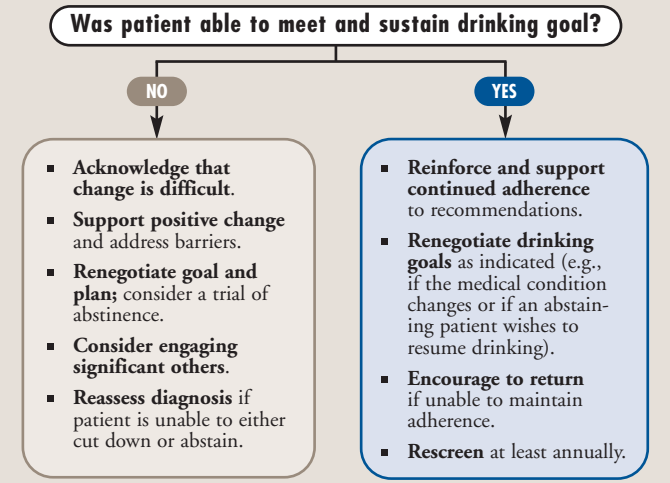
FOR AT-RISK DRINKING (no abuse or dependence)

STEP 3 Advise and Assist



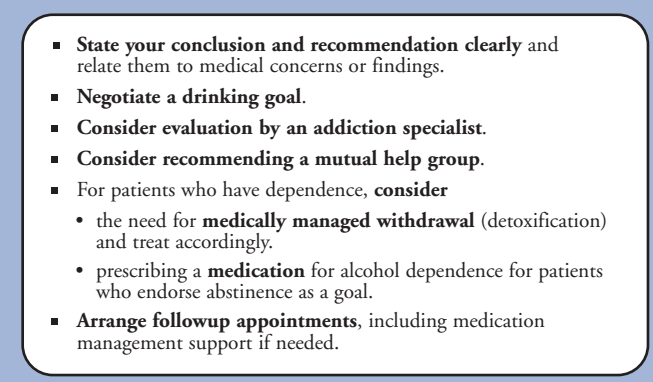
STEP 4 At Followup: Continue Support

REMINDER: Document alcohol use and review goals at each visit.



FOR ALCOHOL USE DISORDERS (abuse or dependence)

STEP 3 Advise and Assist



STEP 4 At Followup: Continue Support

REMINDER: Document alcohol use and review goals at each visit.

